



Product Model Number

CKO-SA16-035016-4801

✓ Model Number Definitions

CKO-XXXX-XXXXXX-XXXX

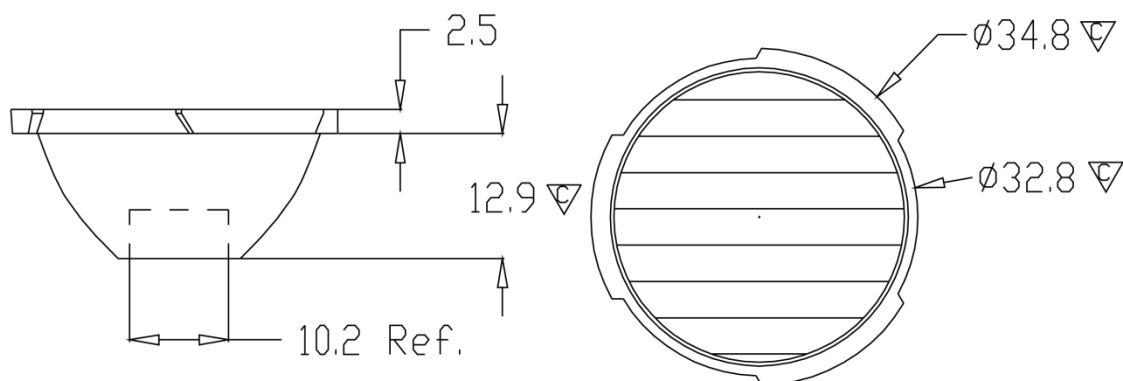


- A. Chun Kuang Optics Corp. Product
- B. Product Type: product abbreviation
Ex:
CH→CoB High Intensity
CC→CoB Compact
CS→Soft Shading for CoB LED
HC→Holder for CoB LED

- C. Identity Code
- D. Lens / Fixture Size
Ex: 075026=Φ75mm / Thickness=26mm (round up)
- E. Serial Numbers

The lens datasheet is applicable for **OsramLED**, that manufactured by Chun Kuang Optics Corp.

✓ Dimensions (mm) : Φ34.8 x 15.4



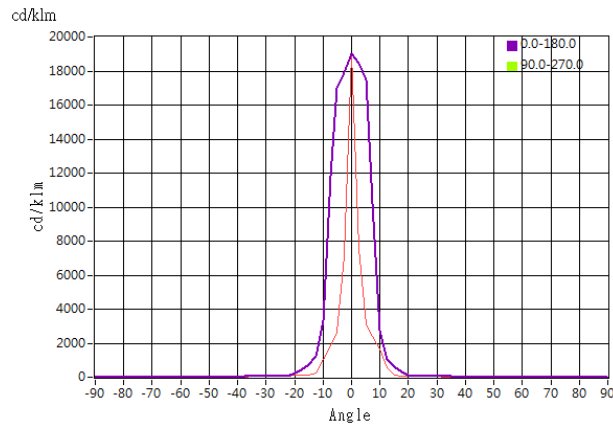
▽:Critical Dimension



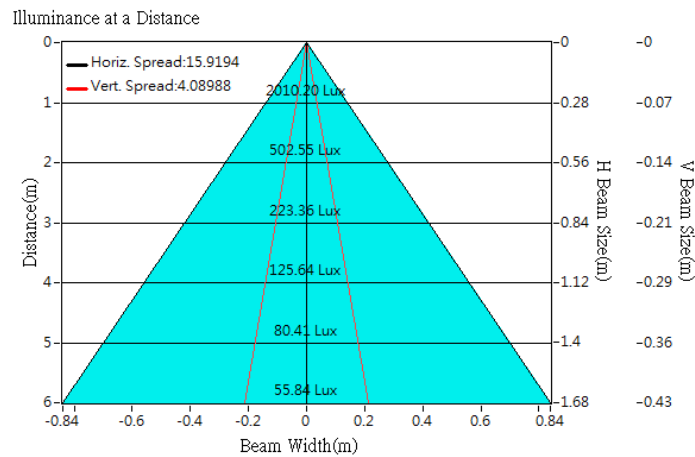
Optical Characteristics

Model Number	CKO-SA16-035016-4801		
LED	Oslon SSL 80		
LES / LED Size	3.0 x 3.0		
FWHM (D50)	4.1° x 15°		
Field Angle (D10)	16° x 23°		
Dimension with Holder	Φ =34.8mm, Thickness=15.4 mm		
Luminous Flux	106 lm	Measured @ 1.1 W	
Material	PC / UL94V2		

cd/klm



Illuminance At Distances

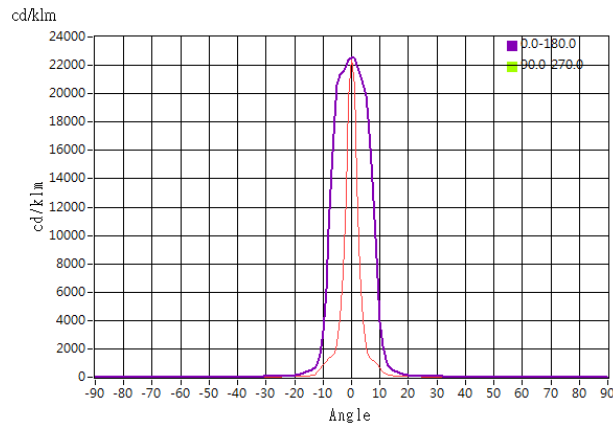




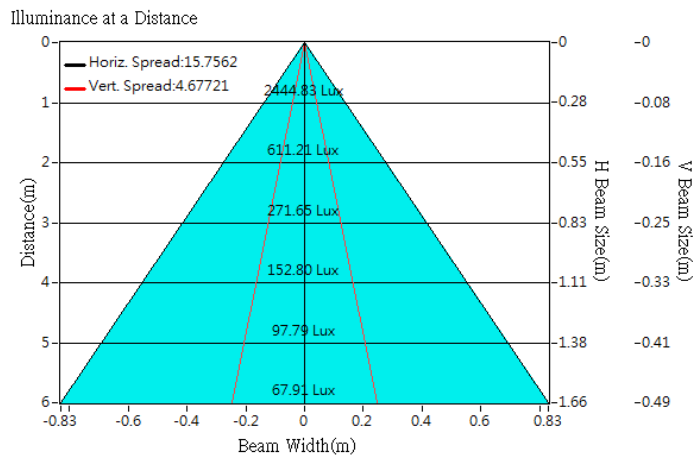
Optical Characteristics

Model Number	CKO-SA16-035016-4801		
LED	Oslon 150		
LES / LED Size	3.0 x 3.0		
FWHM (D50)	4.7° x 15°		
Field Angle (D10)	10° x 22°		
Dimension with Holder	Φ =34.8mm, Thickness=15.4 mm		
Luminous Flux	108 lm	Measured @ 1.2 W	
Material	PC / UL94V2		

cd/klm



Illuminance At Distances

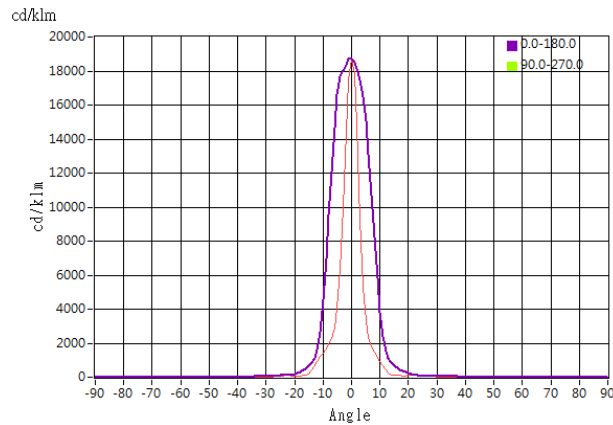




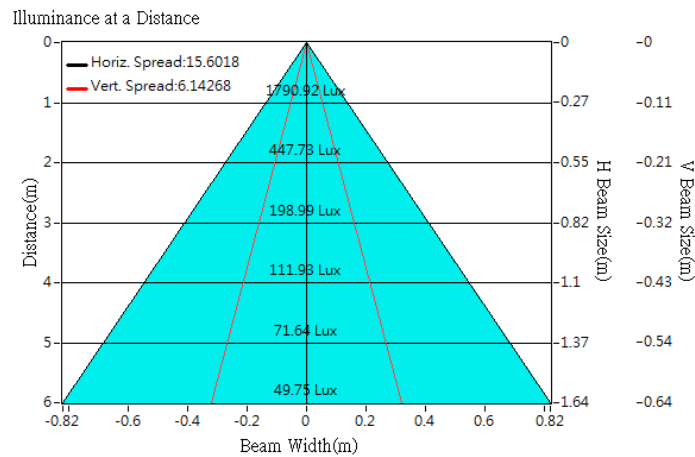
Optical Characteristics

Model Number	CKO-SA16-035016-4801		
LED	Oslon square		
LES / LED Size	3.0 x 3.0		
FWHM (D50)	6° x 15°		
Field Angle (D10)	15° x 23°		
Dimension with Holder	Φ =34.8mm, Thickness=15.4 mm		
Luminous Flux	96 lm	Measured @ 1.1 W	
Material	PC / UL94V2		

cd/klm



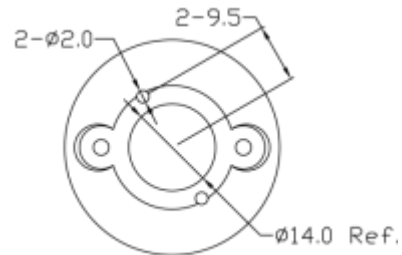
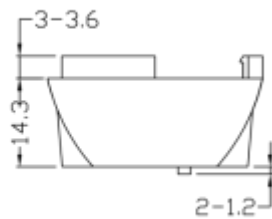
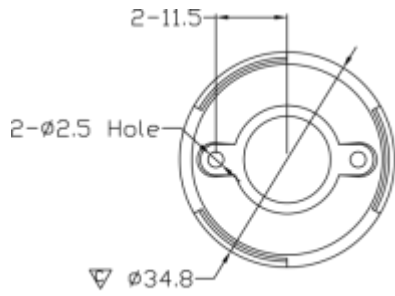
Illuminance At Distances





Lens Accessories - Lens Holder

Product Model	Size (mm)	Material
CKO-HL16-035020-3801	34.8 x 19.1	PC-V0



Bottom view

▽:Critical Dimension